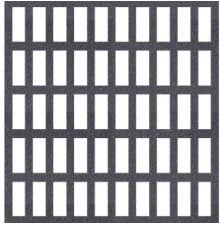


Product Datasheet

d² Dura Grating 50mm Rectangular Standard Mesh



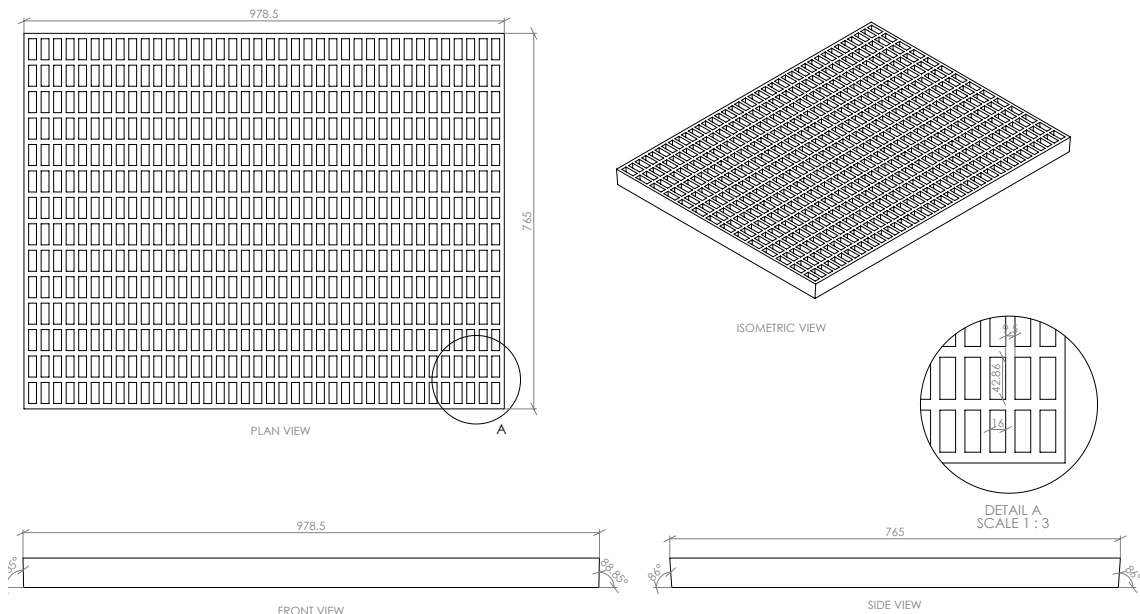
Product Description

d² Dura Grating Rectangular Mesh takes structural flooring to the next level. Available exclusively from Dura Composites, our Rectangular Standard Mesh grating range achieves an industry-leading Class B fire rating according to BS EN 13501-1 and Class B125 strength rating in accordance with EN 124.

Designed, developed and manufactured by Dura Composites, d² Dura Grating’s anti-slip surface is tested to over 1 million footfalls. It offers outstanding safety, performance and durability and is more cost-effective than traditional GRP grating in almost every scenario.

Product Details

Length (mm)	Width (mm)	Colours / Product Codes	Panel Weight (kg)	Weight (kg/sqm)	Open Mesh Size (mm)
978.5	765	Dark Grey (DG05031), Yellow (DG05030)	25	34.1	43 x 16



Product Applications

Common applications for our Rectangular Mesh d² Dura Grating include trench covers, walkways, gully covers, service risers, stair treads, and other narrow span structural walkways which require high strength. The rectangular mesh achieves Class B125 in accordance with EN 124, with a maximum clear span of 630mm. This means it’s capable of withstanding a 125kN (12.5 tonnes) test load, making it suitable for use in pedestrian areas or where occasional vehicular access is likely, ensuring structural integrity and safety.

Packaging

Please see below for relevant packaging information for d² Dura Grating 50mm Standard Mesh.

Packaging	Product Information
Maximum Products Per Pallet	20
Pallet Dimensions (mm)	3060 x 1060 x 1100
Pallet Weight (kg)	682

Colours

Please see below for our d² Dura Grating RAL colours.

Dura Colours	RAL Number
Dark Grey	7043
Yellow	1012
Green	6035

Material

Glass Reinforced Polymer (GRP) d² Dura Grating is produced from glassfibres laminated together using an Orthophthalic Polyester Resin system and a gritted finish. It is resistant against a wide range of chemicals and temperature spectrums. Material samples are available on request, along with a copy of our chemical resistance data. Other resin types are available by special order.

Test Performance Overview

4S Slider Pendulum Test	BS EN 13501-1	BS EN 124	BS 4592	European 35mm Ball Fall Test
PTV: 72 (dry)*, 62 (wet)*	Class B	Class B125	Compliant	Compliant

*Maintains 95% of slip resistance after 1.1 million footfalls.

For more information please refer the Technical Installation Manual or speak to your Dura Composites Representative.

Safety Information

It is advisable to undertake a risk assessment, with particular focus on manual handling procedures. Wear appropriate gloves and coveralls to shield skin from abrasions. If shaping the product, it is essential to factor in the potential production of dust. To mitigate this, it is vital to either suppress the dust at source or employ effective extraction methods. We strongly recommend the use of appropriate respiratory protective equipment (RPE), specifically filtering facepiece class 3 (FFP3) masks, alongside adequate eye protection to guard against dust.

Recyclability

Return to manufacturer or downcycle.

Sustainability

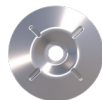
The embodied carbon for A1-A3 (production stage) as defined in BS EN 15804 is 3.8kg CO₂ eq/kg.

Common Fixing Options

Some of the most common stainless steel fixing options are shown below. For a full list of fixings please see the d² Dura Grating brochure.



Large Dome Washer
(BFX01003)



Extra Large Dome Washer
(BFX02165)



Uni-Strut Clamps
(DP05053)

Warranty

25 year limited warranty available. Please register your product with us within 30 days of your invoice date. Visit www.duracomposites.com/warranty.