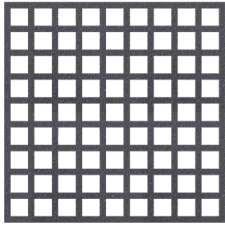


Product Datasheet

d² Dura Grating 30mm Mini Mesh



Product Description

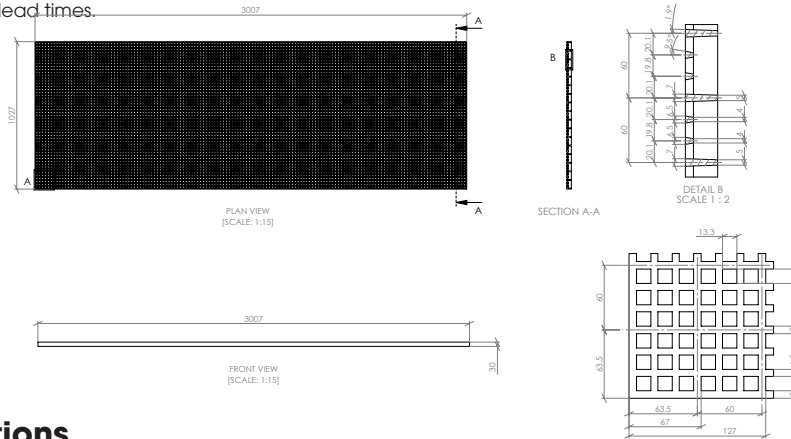
d² Dura Grating is a new patent pending GRP grating series that takes structural flooring to the next level. Available exclusively from Dura Composites, our Mini Mesh grating range achieves an industry-leading Class B fire rating according to BS EN 13501-1.

Designed, developed and manufactured by Dura Composites, d² Dura Grating’s anti-slip surface is tested to over 1 million footfalls. It offers outstanding safety, performance and durability and is more cost-effective than traditional GRP grating in almost every scenario.

Product Details

Length (mm)	Width (mm)	Colours / Product Codes	Panel Weight (kg)	Weight (kg/sqm)	Open Mesh Size (mm)
3007	1027	Dark Grey (DG03309), Sand (DG03303), Light Grey (DG03306), Green (DG03312)	46.94	15.2	13 x 13
4027	1267	Dark Grey (DG03308), Sand (DG03302), Light Grey (DG03305), Green (DG03311)	77.55		
4027	1567*	Dark Grey (DG03307), Sand (DG03301), Light Grey (DG03304), Green (DG03310)	95.92		

*May be subject to extended lead times.



Product Applications

Common applications for d² Dura Grating include walkways, gantries, gully covers, service risers, access platforms, stair treads, ramps, bund flooring, roof walkways, fencing, gates, trash screens, pontoons, mezzanines and low-rise balcony flooring.

Packaging

Please see below for relevant packaging information for d² Dura Grating 30mm Mini Mesh.

Packaging	Product Information
Maximum Products Per Pallet	25 (4050 x 1250 panel) 20
Pallet Dimensions (mm)	3007 x 1027 x 900 4027 x 1267 x 900 4027 x 1567 x 900
Pallet Weight (kg)	1150 1938 2397

Colours

Please see below for our d² Dura Grating RAL colours.

Dura Colours	RAL Number
Dark Grey	7043
Green	6035
Light Grey	7047
Sand	1001

Material

Glass Reinforced Polymer (GRP) d² Dura Grating is produced from glassfibres laminated together using an Orthophthalic Polyester Resin system and a gritted finish. It is resistant against a wide range of chemicals and temperature spectrums. Material samples are available on request, along with a copy of our chemical resistance data. Other resin types are available by special order.

Test Performance Overview

4S Slider Pendulum Test	BS EN 13501-1	BS 4592	European 20mm Ball Fall Test
PTV: 72 (dry)*, 62 (wet)*	Class C	Compliant	Compliant

*Maintains 95% of slip resistance after 1.1 million footfalls.

For more information please refer the Technical Installation Manual or speak to your Dura Composites Representative.

Load and Deflection Data

Deflection is shown in millimetres (mm), with all columns denoting clear spans*. Green/red cell colours indicate above and below L/100, which is the equivalent of 1% deflection. To view data for alternative standard load deflection such as L/200, or specific data for your project, visit www.duracomposites.com/power-of-composites.

Point Load (PL)

	800mm	900mm	1000mm	1100mm	1200mm	1300mm
0.5 kN/ PL	1.6	2.2	2.8	3.5	4.4	5.5
1.0 kN/ PL	3.1	4.1	5.1	6.4	7.9	9.5
1.5 kN/ PL	4.4	5.7	7.1	8.9	11	13.3
2.0 kN/ PL	5.7	7.3	8.9	11.2	13.9	16.9
2.5 kN/ PL	6.8	8.7	10.7	13.4	16.7	20.4

Maximum Spans (mm)

Load	L/100	L/200
0.5 kN	2090	1430
1.0 kN	1620	980
1.5 kN	1280	740
2.0 kN	1080	580
2.5 kN	930	480

Uniformly Distributed Loads (UDL)

	800mm	900mm	1000mm	1100mm	1200mm	1300mm
1.0 kN/m ² UDL	1	1.6	2.5	3.5	4.7	6
2.0 kN/m ² UDL	1.8	3.1	4.9	7	9.2	11.6
3.0 kN/m ² UDL	2.7	4.5	7.2	10.2	13.6	17.2
4.0 kN/m ² UDL	3.5	6	9.4	13.4	17.9	22.7
5.0 kN/m ² UDL	4.7	7.6	11.8	16.7	22.2	28.2

Maximum Spans (mm)

Load	L/100	L/200
1.0 kN/m ²	2090	1360
2.0 kN/m ²	1390	1000
3.0 kN/m ²	1130	890
4.0 kN/m ²	1020	830
5.0 kN/m ²	940	760

Key: ● = Within limits ● = Out of limits

*May 2024. Due to our policy of continual improvement & testing, we reserve the right to change specifications without notice.

Safety Information

It is advisable to undertake a risk assessment, with particular focus on manual handling procedures. Wear appropriate gloves and coveralls to shield skin from abrasions. If shaping the product, it is essential to factor in the potential production of dust. To mitigate this, it is vital to either suppress the dust at source or employ effective extraction methods. We strongly recommend the use of appropriate respiratory protective equipment (RPE), specifically filtering facepiece class 3 (FFP3) masks, alongside adequate eye protection to guard against dust.

Recyclability

Return to manufacturer or downcycle.

Sustainability

The embodied carbon for A1-A3 (production stage) as defined in BS EN 15804 is 3.8kg CO₂ eq/kg.

Common Fixing Options

Some of the most common stainless steel fixing options are shown below.



M / S / L
Dome Washer
(BFX01002/4/5/3)



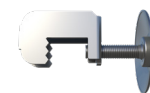
Channel Clamps
(BFX01027)



Straight J Clamp
(FX01129)



Offset J Clamp
(FX01128)



Jaw Clamp
(FX01033)



M Clip
Mini Shallow/Deep
(BFX01010/09)

Warranty

25 year limited warranty available. Please register your product with us within 30 days of your invoice date. Visit www.duracomposites.com/warranty.